

AN ACCOUNT OF THE REPTILES AND BATRACHIANS
COLLECTED BY DR. L. LORIA IN BRITISH NEW GUINEA
BY G. A. BOULENGER, F. R. S.

(Plates VI, VII, VIII).

The important collection which it has been my privilege to name and describe for the Genoa Museum, was made by Dr. Loria in the years 1889-1892 in South-Eastern New Guinea and the adjacent islands Fergusson and Goodenough, D'Entrecasteaux Group.

The localities mentioned in this paper are the following, in alphabetical order :

- Aroma, on the sea-coast (10.8 S., 147.59 E.).
- Bara Bara, Coast of Milne Bay.
- Borepata, near Port Moresby.
- Gerekanumu, South slope of Astrolabe Range.
- Haveri, in Moroka.
- Hula, Hood Point, S. E. of Port Moresby.
- Inawi, Mekeo district.
- Kamali, close to the mouth of the Kemp Welch river, Hood Bay, 60 miles E. of Port Moresby.
- Kapa Kapa, 30 miles East of Port Moresby.
- Kelesi, Upper Kemp Welch river.
- Oro Bay.
- Moroka, Bartholomew Range, 2300 feet.
- Maupa, Aroma Bay.
- Rigo, near Kapa Kapa.
- Samarai I.^d, 2 or 3 miles from the S. E. extremity of Milne Bay.
- Upuli, Paira Point.
- Vikaiku, St. Joseph River.

REPTILIA.

EMYDOSAURIA.

Crocodylidae.

1. *Crocodylus porosus*, Schn. — Gerekanumu.

CHELONIA

Chelydidae.

2. *Chelodina novae-guineae*, Blgr. — No locality.

SQUAMATA.

LACERTILIA.

Geckonidae.

3. *Gymnodactylus pelagicus*, Gir. — Bara Bara, Kelesi, Vikaiku.

4. *Gymnodactylus lousiadensis*, De Vis. — Gerekanumu.

A single specimen, with an angular series of 14 preanal pores, separated from a series of 17 rather indistinct femoral pores under each thigh. The specimen agrees perfectly well with De Vis's description, except that the enlarged dorsal tubercles are feebly keeled instead of smooth.

The type came from Sudest I.^d The British Museum possesses specimens from Fergusson I.^d and Woodlark I.^d

5. *Gymnodactylus lorise*, sp. n. (Plate VI). — Head large; snout longer than the diameter of the orbit, which equals its distance from the nostril or from the ear-opening; forehead and loreal region concave; ear-opening roundish, one third the diameter of the eye. Body and limbs rather elongate. Digits strong, slightly depressed at the base, strongly compressed distally, with well-developed transverse lamellae inferiorly. Head granular, with small round tubercles on the occipital and temporal regions.

Rostral subquadrangular, nearly twice as broad as deep, with median cleft above; a large supranasal, separated from its fellow by a small azygous shield; nostril pierced between the rostral, the supranasal, the first upper labial, and three or four small granules; twelve upper and ten or eleven lower labials; symphysial pentagonal or subtriangular; two or three pairs of chin-shields, median largest and forming a suture behind the symphysial; throat minutely granular. Body and limbs covered above with small flat granules intermixed with small round, flat, feebly keeled tubercles; a series of enlarged tubercles on a fold along each side of the body, from axilla to groin. Ventral region covered with small, smooth, juxtaposed or subimbricate flat scales. Male with a long, uninterrupted series of femoral and praeanal pores, 30 on each side, forming a right angle in the middle, preceded by 4 additional praeanal pores; no praeanal groove. Tail cylindrical, tapering, covered with uniform flat scales. Brown above, with a series of paired blackish spots along the back, the last pair, on the base of the tail, confluent into a V; a V-shaped dark band from eye to eye, the apex on the nape; lower parts pale brown. Reproduced tail longitudinally streaked with black.

	♂	♀
Total length	172	187 millim.
Head	25	34 .
Width of head	18	25 .
Body	60	88 .
Fore limb	33	42 .
Hind limb	45	59 .
Tail	87	65 . (1)

Two specimens. Haveri and Moroka.

6. **Hemidactylus frenatus**, D. & B. — Port Moresby, Rigo, Inawi, Kapa Kapa.

7. **Lepidodactylus woodfordii**, Blgr. — Aroma; several specimens. Originally described from Faro I.^d, Bismarck Archipelago.

(1) Tail reproduced.

8. *Gecko pumilus*, Blgr. — Port Moresby; three specimens.

The species was described from a single female specimen obtained on Murray I.^d, Torres Straits, by the Rev. S. Macfarlane. The male has an angular series of 17 preanal pores.

Pygopodidae.

9. *Lialis burtonii*, Gray. — Borepata, Haveri, Hula, Port Moresby, Inawi, Kapa Kapa.

Numerous specimens, belonging to the var. D and I of my Catalogue.

Agamidae.

10. *Gonyocephalus dilophus*, D. & B. — Bara Bara, Haveri, Moroka, Vikaiku.

11. *Gonyocephalus modestus*, Meyer. — Gerekanumu, Haveri.

12. *Gonyocephalus papuensis*, Macleay. — Gerekanumu, Haveri.

13. *Physignathus temporalis*, Gthr. — Aroma, Borepata, Inawi, Kelesi, Vikaiku.

Varanidae.

14. *Varanus indicus*, Daud. — Aroma, Bara Bara, Gerekanumu.

15. *Varanus gouldii*, Gray. — Aroma, Hula, Gerekanumu.

16. *Varanus prasinus*, Schleg. — Aroma, Moroka, Gerekanumu.

Scincidae.

17. *Tiliqua gigas*, Schneid. — Hula, Bara Bara, Kapa Kapa, Haveri.

18. *Lygosoma minutum*, Meyer. — Moroka.

19. *Lygosoma solomonis*, Blgr. — Bara Bara.

Originally described from Faro I.^d, Bismarck Archipelago. The British Museum has since received specimens from New Georgia, in the same Archipelago.

20. *Lygosoma elegantulum*, Ptrs. & Dor. — Bara Bara, Moroka, Haveri, Inawi.

21. *Lygosoma loriae*, sp. n. (Pl. VII, fig. 1). — Section *Himulia*. Body elongate, limbs short; the distance between the end of the snout and the fore limb is contained once and two thirds to once and three fourths in the distance between axilla and groin. Snout short, obtuse. Lower eyelid scaly. Nostril pierced in a single nasal; no supranasal; frontonasal broader than long, forming a suture with the rostral; praefrontals meeting with their inner angles, or narrowly separated from each other; frontal as long as or a little shorter than frontoparietals and interparietal together, in contact with the two anterior supraoculars; four supraoculars; eight supraciliaries; frontoparietals and interparietal distinct, subequal in length; parietals forming a suture behind the interparietal; no enlarged nuchals, three or four scales in contact with each parietal; fifth upper labial below the centre of the eye. Ear-opening oval, smaller than the eye-opening; no auricular lobules. 30 or 32 smooth scales round the body, laterals smallest, the two vertebral series enlarged. Adpressed limbs widely separated. Digits short, feebly compressed; subdigital lamellae smooth, divided, 16 or 17 under the fourth toe. Tail very thick. Blackish brown above, freckled and vermiculate with yellowish brown; yellowish beneath, throat and sides spotted with dark brown.

Total length	143 millim.
Head	12 »
Width of head	9 »
Body	54 »
Fore limb	13 »
Hind limb	19 »
Tail (reproduced)	77 »

Three specimens from Moroka.

22. *Lygosoma variegatum*, Ptrs. — Haveri.

23. *Lygosoma jobiense*, Meyer. — Bara Bara, Vikaiku, Haveri, Moroka.

24. *Lygosoma annectens*, sp. n. (Pl. VII, fig. 2). — Connecting the sections *Himulia* and *Otosaurus*. Habit lacertiform; the distance between the end of the snout and the fore limb nearly equals

the distance between axilla and groin. Snout very short, obtuse. Lower eyelid scaly. Nostril pierced in a single nasal; frontonasal broader than long, forming a broad suture with the rostral and a narrow one with the frontal; nasal followed by two superposed shields on the left side and by three on the right, the upper of the latter representing a supranasal; frontal as long as frontoparietals and interparietal together, in contact with the three anterior supraoculars; nine supraoculars, first twice as long as second, ninth very small; twelve supraciliaries; frontoparietals and interparietal distinct, the former a little longer than the latter; parietals forming a suture behind the interparietal; no nuchals, each parietal in contact with five scales; fifth, sixth and seventh labials below the eye. Ear-opening large, oval, smaller than the eye-opening; tympanum scarcely sunk; no auricular lobules. 50 smooth scales round the middle of the body, laterals smallest. A pair of enlarged preanals. The hind limb reaches the axilla. Digits elongate, compressed; subdigital lamellae unicarinate, divided, 21 under the fourth toe. Tail once and three fifths the length of head and body. Brown above, with yellowish spots inclosed in a dark brown network; a round, deep-black spot above the shoulder; lower parts yellowish.

Total length	122 millim.
Head	11 "
Width of head	8 "
Body	37 "
Fore limb	15 "
Hind limb	23 "
Tail	74 "

A single specimen from Moroka.

25. *Lygosoma smaragdinum*, Less. — Aroma, Bara Bara.

Five (exceptionally four) labials anterior to the subocular. 24 scales round the middle of the body.

26. *Lygosoma virens*, Ptrs. — Bara Bara.

27. *Lygosoma semoni*, Oudemans. — Bara Bara, Kelesi.

28. *Lygosoma elegans*, Blgr. — Moroka.

26 or 28 scales round the body, and dorsal spots smaller than in the type.

29. **Lygosoma subnitens**, Bttgr. — Moroka.

In some specimens the praefrontals form a median suture, whilst in others the frontonasal touches the point of the frontal as in the type from Bongu, Astrolabe Bay.

30. **Lygosoma fuscum**, D. & B. — Rigo, Kelesi, Aroma, Bara Bara, Haveri, Inawi.

The extremely numerous specimens from the above localities vary much in the coloration and markings. Some are uniform brown, others olive with bluish white spots or ocelli edged with black, or with large black and white spots or marblings on the sides; four or six light streaks may be present along the body; throat sometimes much spotted with dark brown, or nearly entirely black (*L. atrogulare*, Douglas Ogilby).

31. **Lygosoma nigrigulare**, sp. n. (Pl. VII, fig. 3). — Section *Liolepisma*. Habit lacertiform; the distance between the end of the snout and the fore limb is contained once and one sixth to once and one third in the distance between axilla and groin. Snout moderate, obtuse. Lower eyelid with an undivided transparent disk. Nostril pierced in the nasal; no supranasal; frontonasal broader than long, forming a broad suture with the rostral and a narrower one with the frontal; latter shield as long as the frontoparietal, in contact with the first and second supraoculars; four supraoculars; second largest; eight supraciliaries; frontoparietal single; no interparietal; parietals forming a median suture; a pair of nuchals and a pair of temporals border the parietals; four upper labials anterior to the subocular. Ear-opening oval, larger than the transparent palpebral disk, with small, pointed, projecting lobules all round the border. 34 to 38 scales round the middle of the body, dorsals largest and smooth or faintly tricarinate. Praeanal scales slightly enlarged. The hind limb reaches the axilla or the shoulder. Fingers four, toes five; subdigital lamellae smooth, 30 to 32 under the fourth toe. Tail once and a half to once and two thirds the length of head and body. Blackish brown above, strongly iridescent, uniform or with indistinct

small paler spots; sides and lower surface of head black; lower parts of body and limbs dirty white, with or without some blackish spots on the breast.

Total length	196 millim.
Head	18 "
Width of head.	13 "
Body	58 "
Fore limb	27 "
Hind limb	40 "
Tail	120 "

Three specimens from Inawi.

These lizards are very nearly related to *L. fuscum*, of which I should have regarded them as a melanotic variety but for the absence of the interparietal shield.

32. *Lygosoma bicarinatum*, Macleay. — Rigo, Aroma, Hula.

Varies much in colour, as pointed out by Douglas Ogilby (Rec. Austral. Mus. 1, 1890, p. 93) who has verified the suggestion made by me as to the identity of this species with *Heteropus albertisii*, Ptrs. & Dor.

33. *Lygosoma novae-guineae*, Meyer. — Bara Bara, Haveri.

34. *Lygosoma iridescens*, Blgr. — Bara Bara.

A single specimen, differing from the type in having 24 scales round the middle of the body, 60 lamellae under the fourth toe, and a well-marked light, dark-edged dorso-lateral streak extending from the supraciliary border to the base of the tail.

35. *Lygosoma mivarti*, Blgr. — Bara Bara, Moroka, Inawi.

36. *Lygosoma cyanogaster*, Less. — Bara Bara, Haveri.

37. *Lygosoma baudinii*, D. & B. — Haveri, Rigo, Aroma, Inawi, Kelesi.

38. *Lygosoma rufescens*, Shaw. — Aroma, Haveri, Bara Bara, Hula.

30 or 32 scales round the middle of the body, some of the vertebral scales sometimes fused, forming an interrupted series of very broad, single scales.

39. *Lygosoma forbesii*, Blgr. — Bara Bara.

A single specimen, differing from the type only in having 24 scales round the body instead of 26.

40. *Lygosoma crassicauda*, A. Dum. — Aroma, Inawi, Kelesi.

41. *Lygosoma muelleri*, Schleg. — Haveri.

42. *Ablepharus boutonii*, Desj. — Hula, Aroma, Bara Bara, Port Moresby.

The very numerous specimens collected at Aroma are interesting as showing the great amount of variation to which lepidosis is subjected in this species. The number of scales round the body is 26 or 28, rarely 24; four or five upper labials anterior to the subocular; in two specimens, the fronto-nasal is in contact with the frontal, whilst in the others the praefrontals are more or less extensively in contact with each other. Taking the coloration also into consideration, the specimens may be referred in part to *A. boutonii*, Desj., in part to *A. poecilopleurus*, Wiegman, whilst a few approach or represent *A. peronii*, Coct. One specimen, with 20 scales, and well-defined stripes answers to the definition of *A. rutilus*, Ptrs.

The specimens from Hula fall into the definition of *A. poecilopleurus* and those from Bara Bara and Port Moresby into that of *A. peronii*.

OPHIDIA.

Boidae.

43. *Liasis fuscus*, Ptrs. — No locality.

44. *Liasis albertisii*, Ptrs. & Doria. — Aroma, Rigo, Bara Bara, Inawi.

The numbers of scales and shields in the five specimens are as follow :

♂ . . .	Se. 51	V. 268	C. 65
♀ . . .	55	277	71
♀ . . .	53	273	69
Yg. . .	53	268	62
Yg. . .	51	272	67

45. *Python spilotes*, Lacép. — No locality.

The specimens belong to the var. *variegatus*, Gray.

46. *Python amethystinus*, Schn. — Moroka, Bara Bara.
 47. *Chondropython viridis*, Schleg. — Bara Bara.
 48. *Enygrus carinatus*, Schn. — Bara Bara, Haveri, Good-enough I.^d

Colubridae.

49. *Tropidonotus picturatus*, Schleg. — Moroka, Haveri.

Three specimens of the typical form, as figured by Schlegel and Jan.

Frontal once and one third as long as broad; two or three prae- and three or four postoculars; temporals 1 + 1 or 1 + 2; eight upper labials, fourth and fifth entering the eye, sixth largest. Scales very strongly keeled, in 15 rows. Uniform brown above; sides of head yellow, with a black bar below the eye and an oblique one from the eye to the commissure of the jaws, continued along the side of the throat, which may be spotted with black; two black bars across the nape; lower parts yellowish, uniform or with brown dots.

♂	Total length	325 millim.;	tail	85 millim.;	V.	125;	C.	47
♀	»	»	400	»	70	»	»	130; » 44
♀	»	»	355	»	?	»	»	123; » ?

I am now convinced that several distinct species have been mixed up under *T. picturatus* by Peters & Doria (Ann. Mus. Civ. Genova, XIII, 1878, p. 388), whose view I endorsed in the 'Catalogue of Snakes' (I, p. 215). The specimens from Halmaheira have been described by Boettger as *T. punctiventris* and *T. halmahericus* (Zool. Anz. 1895, pp. 29 and 30); those from Ceram should be called *T. elongatus*, Jan; those from New Guinea and North Australia with 15 rows of scales *T. picturatus*, Schleg., and *T. mairii*, Gray; and for those with 17 rows of scales I propose the name *T. doriae*.

50. *Tropidonotus mairii*, Gray. — Moroka, Haveri, Borepata (?) near Port Moresby.

Frontal once and a half to once and two thirds as long as broad; eye larger than in *T. picturatus*; two (exceptionally one)

prae- and three (exceptionally two) postoculars; temporals $1 + 1$ or $1 + 2$ (rarely $2 + 2$); eight upper labials, fourth and fifth, or third, fourth, and fifth entering the eye, sixth and seventh equal, or sixth or seventh largest. Scales strongly keeled, in 15 rows. Ventrals 144-170; subcaudals 56-82. Olive, brown, or blackish, with small black spots, or with cross-bars anteriorly; subcaudals, and often also the ventrals, edged with black. Larger and more slender than *T. picturatus*.

51. *Tropidonotus doriae*, sp. n. — Dentition as in *T. picturatus* and *T. mairii* (25-29 maxillary teeth). Eye rather large. Rostral twice as broad as deep, just visible from above; internasals as long as broad or a little longer than broad, broadly truncate in front, as long as the praefrontals; frontal once and a half to once and two thirds as long as broad, longer than its distance from the end of the snout, shorter than the parietals; loreal deeper than long; two prae- and three postoculars; temporals usually $2 + 2$, sometimes $1 + 2$ or $1 + 1$; eight (exceptionally nine) upper labials, third, fourth and fifth (or fourth, fifth and sixth) entering the eye; four or five lower labials in contact with the anterior chin-shields, which are shorter than the posteriors. Scales in 17 rows, strongly keeled, outer row feebly keeled. Ventrals 146-158; anal divided; subcaudals 69-79. Yellowish, reddish, or dark grey above, with more or less distinct black or blackish cross-bars as in *T. mairii*, var. *semicinctus*, D. & B.; upper labials yellowish, with black sutures; yellowish beneath, uniform or with some darker dots, none of the shields with dark edges.

Total length 990 millim.; tail 250.

Haveri, Moroka. 18 specimens.

52. *Stegonotus modestus*, Schleg. — Hula, Haveri, Bara Bara, Samarai.

The numerous specimens vary so much in scaling and in coloration that I now consider *S. reticulatus*, Blgr., as merely a variety of *S. modestus*.

53. *Dendrophis calligaster*, Gthr. — Hula, Inawi, Bara Bara.

54. *Dendrophis lineolatus*, Hombr. & Jacq. — Haveri, Bara Bara.

55. *Dendrophis meeki*, Blgr. — Haveri, Moroka.

56. *Dipsadomorphus irregularis*, Merr. — Hula, Kapa Kapa, Bara Bara.

57. *Distira macfarlani*, Blgr. — No locality.

A single specimen, agreeing entirely with the types, but larger, measuring 800 millim., and more elongate. 35 scales round the neck, 45 round the body; ventrals 322.

58. *Distira brugmansii*, Boie. — No locality.

59. *Platurus colubrinus*, Schn. — Borepata (?).

Apistocalamus, g. n.

Near *Ogmodon*, Ptrs., and *Toxicocalamus*, Blgr. Maxillary extending forwards as far as the palatine, with 5 long grooved teeth gradually decreasing in length; mandibular teeth gradually decreasing in length. Head small, not distinct from neck; eye very small, with vertically subelliptic pupil; nostril pierced between the first upper labial, two nasals, and the internasal; a large praecular, in contact with the posterior nasal. Body cylindrical; scales smooth, without pits, in 15 rows; ventrals rounded. Tail moderate; subcaudals in two rows.

60. *Apistocalamus loriae*, sp. n. (Pl. VIII, fig. 1). — Snout short, broadly rounded. Rostral a little broader than deep, the portion visible from above measuring one third its distance from the frontal; internasals small, about one third the length of the praefrontals; frontal a little longer than broad, as long as its distance from the end of the snout, much shorter than the parietals; praecular single, twice as long as deep, forming a suture with the posterior nasal; two postoculars, upper much larger than lower; temporals 1 + 2; six upper labials, third and fourth entering the eye, sixth largest; three lower labials in contact with the anterior chin-shields; posterior chin-shields smaller, separated by a large scale. Scales in 15 rows. Ventrals 196; anal divided; subcaudals 48 + ? Dark greyish olive above; upper lip and lower parts yellowish, with three series of small dark spots along the ventrals; subcaudals dark, with light edges.

Total length 580 millim. ; tail (injured) 90.

A single male specimen from Haveri.

61. **Pseudelaps muelleri**, Schleg. — Moroka, Haveri, Bara Bara, Fergusson I.^d

62. **Diemenia psammophis**, Schleg. — No locality.

63. **Pseudechis papuanus**, Ptrs. & Doria. — Rigo.

64. **Micropechis ikaheka**, Less. — Haveri.

65. **Acanthophis antarcticus**, Shaw. — Inawi.

BATRACHIA.

ECAUDATA.

Ranidae.

1. **Rana macroscelis**, Blgr. — Haveri. Numerous specimens.

The tibio-tarsal articulation reaches the tip of the snout or a little beyond. Males covered above with large flat warts in addition to small granules; an external vocal sac on each side of the throat, and a large oval gland on the inner side of the arm. Brown above, uniform or with small yellowish spots or vermiculations; throat spotted or marbled with brown.

The females, on which the species was founded, much resemble *R. guppyi*, differing in the larger tympanum and the disposition of the vomerine teeth. Males differ very widely from those of that species, which are devoid of vocal sacs and humeral glands; they show that *R. macroscelis* may be considered as a form connecting the group to which *R. grunniens* and *R. guppyi* belong with the section known as *Hylorana* or *Limnodytes*.

2. **Rana papua**, Less. — Haveri, Moroka, Bara Bara, Rigo, Vikaiku.

Some of the specimens bear on the sides of the body large cysts formed by Dipterous larvae, much like those produced by *Batrachomyia* on the Australian frogs of the genus *Pseudophryne*. I have not been able to obtain information on these larvae from the entomological section of the British Museum.

3. **Cornufer corrugatus**, A. Dum. -- Bara Bara.

Engystomatidae.**4. *Sphenophryne cornuta*, Ptrs. & Doria. — Vikaiku.**

Two specimens, one with, the other without the conical tubercle on the eyelid whence this species derives its name. As the agreement in all other respects is very close and as the presence of a palpebral tubercle is an inconstant feature in *S. celebensis*, F. Müll., I do not think great importance can be attached to that character.

5. ***Sphenophryne verrucosa*, sp. n. (Pl. VIII, fig. 2).** — Tongue entire or slightly nicked behind. Head as long as broad; snout obtusely pointed, projecting, obliquely truncate at the end, as long as the eye, with sharp canthus and vertical lores; interorbital space a little broader than the upper eyelid; tympanum moderately distinct, about half the diameter of the eye. Fingers moderately elongate, slender, terminating in large disks which are broader than long and about twice the width of the digit; first finger shorter than second, terminating in a small disk; toes free, with large disks which are a little smaller than those of the fingers; subarticular and metatarsal tubercles flat, indistinct. The tibio-tarsal articulation reaches the eye or between the eye and the tip of the snout. Skin of upper parts uneven with flat warts and wavy ridges; a more or less distinct conical tubercle near the edge of the upper eyelid; lower parts smooth, or belly slightly granulate. Dark olive above, with blackish spots or marblings; groin and sides of thighs black, spotted with white; an ill-defined ocellus often present on each side of the lumbar region; throat and breast dark brown, or spotted with brown; belly whitish; lower surface of limbs spotted with brown. Male without vocal sacs.

From snout to vent 33 millim.

Two specimens from Moroka. — The British Museum also possesses specimens from Mt. Victoria.

6. ***Sphenophryne loriae*, sp. n. (Pl. VIII, fig. 3).** — Tongue entire. Head broader than long; snout rounded, feebly projecting, a

little shorter than the eye, with strong canthus and slightly oblique, concave lores; interorbital space as broad as or a little broader than the upper eyelid; tympanum moderately distinct, hardly one third the diameter of the eye. Fingers rather short, terminating in very large disks which are broader than long, more than twice the width of the digit, and half the diameter of the eye; first finger shorter than second, terminating in a well-developed disk; toes webbed at the base, with large disks which are a little smaller than those of the fingers; subarticular and metatarsal tubercles flat, indistinct. The tibio-tarsal articulation reaches the tympanum. Skin smooth. Coloration very variable. Grey, brown, or reddish above, uniform or with dark spots or marblings, with or without a yellow vertebral line; a dark brown triangular blotch often present on the back of the head, the base between the eyes; lower parts whitish, uniform or powdered with brown.

From snout to vent 28 millim.

Numerous specimens from Moroka.

7. *Sphenophryne ateles*, sp. n. (Pl. VIII, fig. 4). — Tongue entire. Head broader than long; snout rounded, feebly projecting, a little shorter than the eye, with strong canthus and slightly oblique, concave lores; interorbital space a little broader than the upper eyelid; tympanum distinct, half the diameter of the eye. Fingers rather short, terminating in very large disks which are broader than long, twice the width of the digit, and half the diameter of the eye; first finger very short, not half as long as second, not dilated at the end; toes free, with large disks which are smaller than those of the fingers; subarticular and metatarsal tubercles flat, indistinct. The tibio-tarsal articulation reaches the eye. Upper parts with small warts and longitudinal ridges; lower parts smooth. Grey or brown above; sides and upper surface of snout usually yellowish; a curved, blackish dorso-lateral stripe sometimes present; a light vertebral line or broad stripe sometimes present; brown or blackish beneath.

From snout to vent 15 millim.

Moroka. Several specimens.

8. *Sphenophryne biroï*, Mähely. — Moroka.

9. *Callulops doriae*, Blgr. — Haveri.

10. *Mantophryne lateralis*, Blgr. — Rigo, Moroka.

11. *Choanacantha mehelyi*, sp. n. (Pl. VIII, fig. 5). — Tongue large, free only at the sides; a large tooth-like process on each side of the palate behind the choanae. Snout pointed, strongly projecting, covered with small warts; eye very small; interorbital space broad; tympanum moderately distinct, a little larger than the eye. Fingers short, pointed, first shorter than second; toes slightly webbed at the base, the tips dilated into small disks; subarticular and metatarsal tubercles flat, indistinct. The tibio-tarsal articulations reaches the tip of the snout. Skin smooth. Brown above; a dark blotch below the eye; a fine light line from between the eyes to the vent and from the latter along the back of the thighs and the inner side of the legs; hinder side of thighs dark brown; dirty white beneath, marbled with brown.

From snout to vent 29 millim.

A single specimen from Vikaiku.

The specimen agrees in most points with the recently described *Choanacantha rostrata*, Mähely (¹), but differs in the distinguishable tympanum and the somewhat longer hind limb. It also shows great resemblance to *Xenorhina oxycephala*, Schleg., with which I should feel inclined to unite it but for the fact that both Peters and Günther, who examined the type specimens, do not mention the very prominent tooth-like processes on the palate. The specimen here described further agrees with *Xenorhina oxycephala* in the warty snout, and it is probable Günther was mistaken in attributing the latter character to the defective condition of the type specimens.

Hylidae.

12. *Hyla dolichopsis*, Cope. — Bara Bara, Haveri, Inawi, Kamali, Oro Bay, Maopa, Hula, Moroka.

(¹) Termés. Füzet. (Budapest), XXI, 1898, pl. XII.

13. *Hyla montana*, Ptrs. & Doria. — Gerekanumu.
 14. *Hyla congenita*, Ptrs. & Doria. — Borepata, Inawi, Kamali,
 Kapa Kapa, Maopa, Upuli.
 15. *Hyla arfakiana*, Ptrs. & Doria. — Moroka.
 16. *Hyla nasuta*, Gray. — Kamali.
 17. *Nyctimantis papua*, Blgr. — Moroka.

Pelobatidae.

18. *Batrachopsis melanopyga*, Doria. — Vikaiku.

EXPLANATION OF THE PLATES

Plate VI.

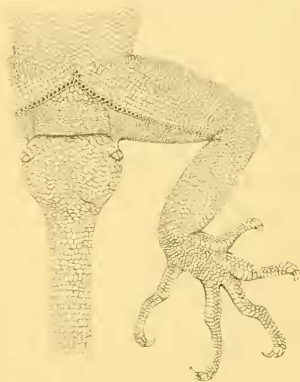
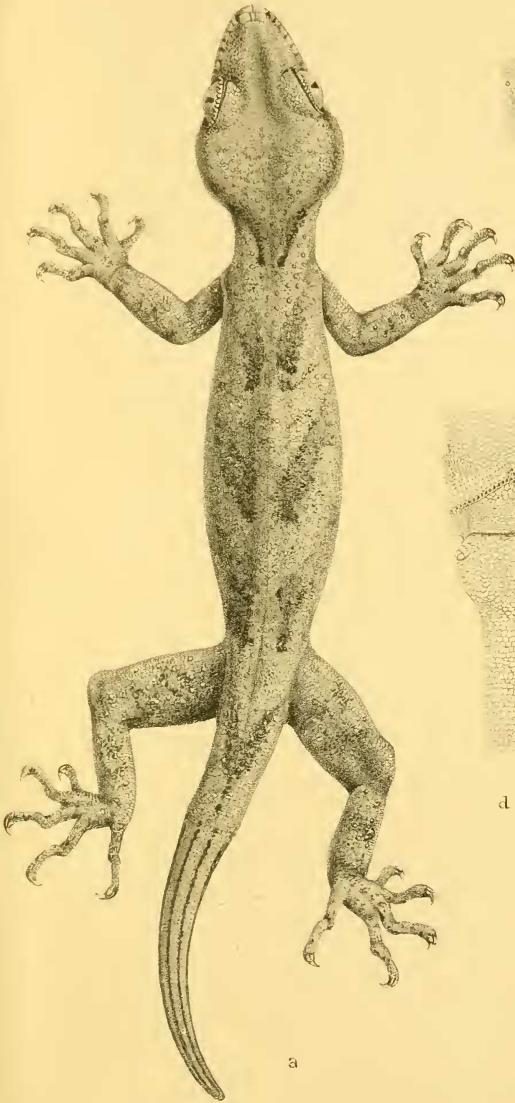
Gymnodactylus loriae; *a.* female; *b.* Side view of head; *c.* Chin;
d. lower view of hind limb, anal region, and base of tail of
 male, $\times 1\frac{1}{2}$.

Plate VII.

- Fig. 1. *Lygosoma loriae*; *a.* upper view of head, $\times 2$.
 " 2. " *annectens*; *a.* upper view of head, $\times 2$.
 " 3. " *nigrigulare*; *a.* lower view of head.

Plate VIII.

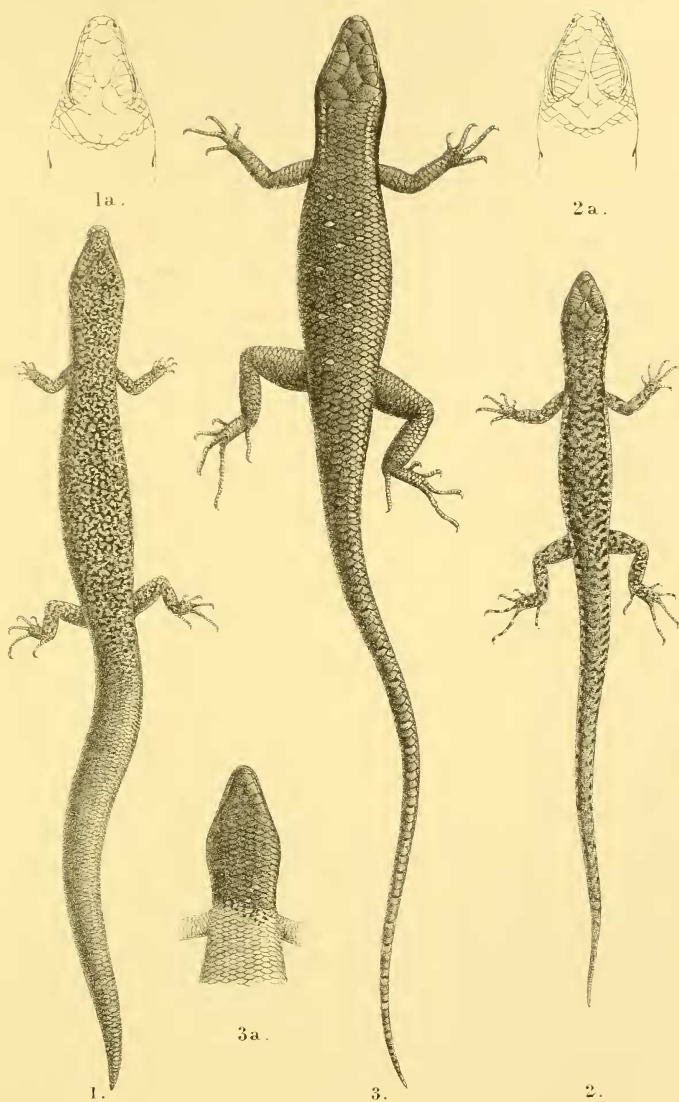
- Fig. 1. *Apistocalamus loriae*; upper, lower and side view of
 head, $\times 2$.
 " 2. *Sphenophryne verrucosa*; *a.* lower view of hand.
 " 3. " *loriae*; *a.* " "
 " 4. " *ateles*; *a.* " "
 " 5. *Choanacantha mehelyi*; *a.* " "
-



J. Green del. et lith.

Minton Brev. imp. London.

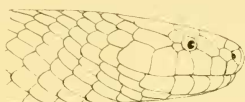
Gymnodactylus lewini.



J. Green del. et lith.

Mintern Bros. imp. London.

1. *Lygosoma loriæ*. 2. *L. annectens*.
3. *L. nigrigulare*.



1.



1a.



4.



2a.



3a.



2.



5a.



3.



5.

J. Green del. et lith.

Mistern Bros. imp. London.

1. *Apistecalamus leriae*. 2. *Sphenophryne verrucosa*.

3. *Sphenophryne leriae*. 4. *Sphenophryne ateles*. 5. *Chcanacantha mehelyi*.